

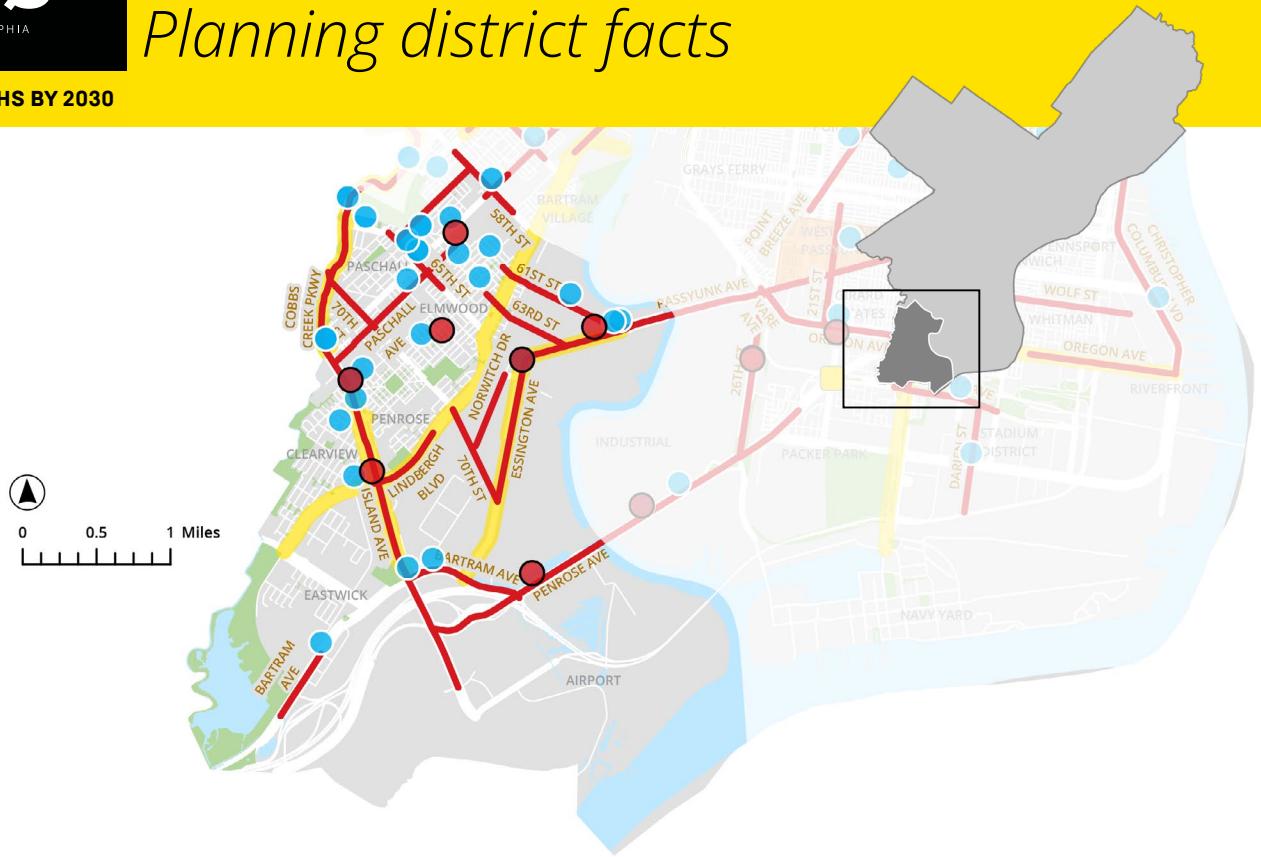
VISION ZERO

CITY OF PHILADELPHIA

LOWER SOUTHWEST PHILADELPHIA

Planning district facts

ZERO TRAFFIC DEATHS BY 2030



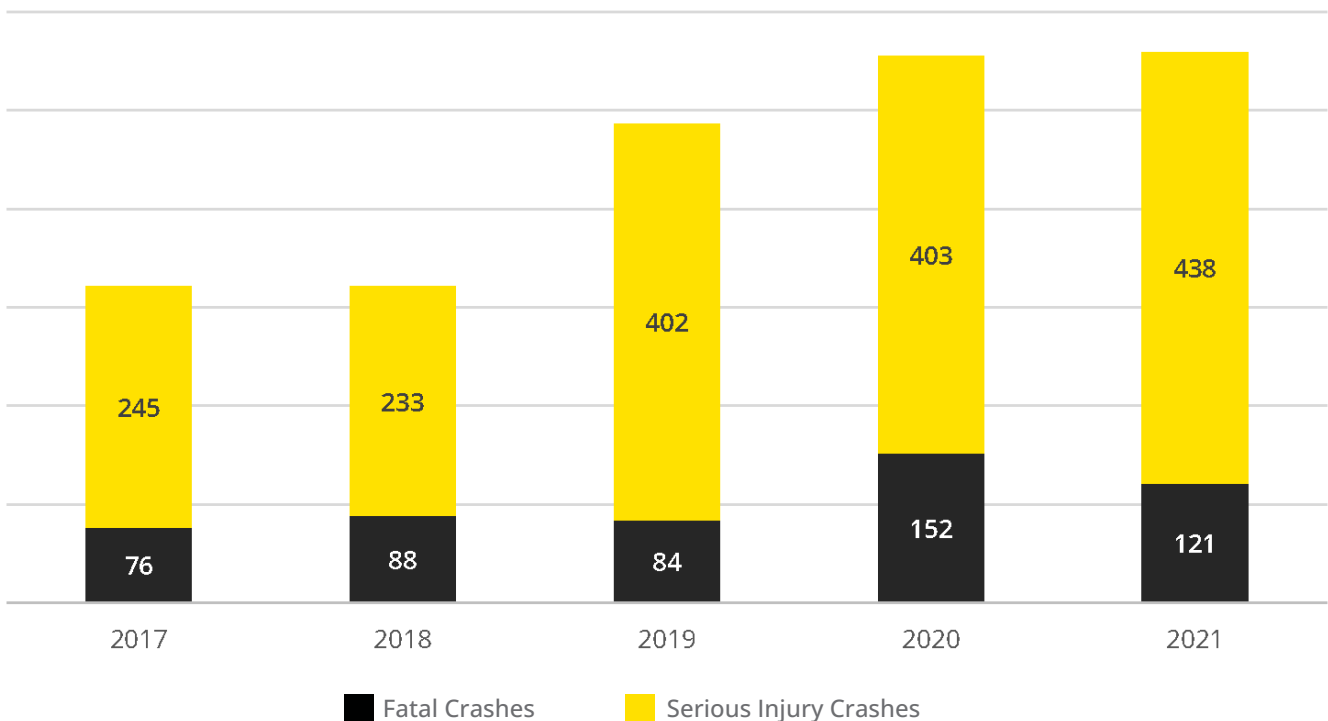
WHAT IS VISION ZERO?

Vision Zero is a strategy to eliminate all traffic-related deaths and severe injuries, while increasing safety, health, and mobility for all.

VISION ZERO CORE PRINCIPLES

- Traffic deaths are preventable and unacceptable.
- Human life is our highest priority.
- Human error is inevitable and unpredictable.
- Safe human behaviors, education, and traffic safety enforcement are essential contributors to a safe transportation system.
- People are inherently vulnerable and speed is a fundamental predictor of crash survival.

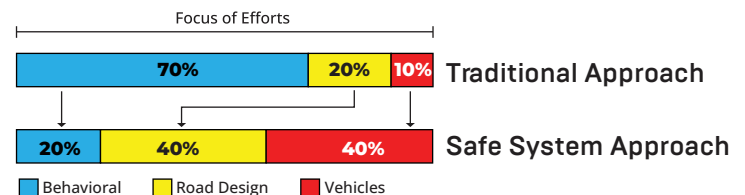
Traffic Deaths and Serious Injuries in Philadelphia (2017-2021)



Data source: PennDOT

SAFE SYSTEMS APPROACH

The City's Vision Zero work uses a **safe systems** approach. Where a traditional approach designs streets to work best when people follow specific rules, a safe system approach accounts for human error. People are not perfect and make mistakes. When they do, our safety systems should be in place to prevent deaths and injuries.



PHILADELPHIA IS PROUD TO ADOPT VISION ZERO.

On November 7, 2016, Mayor James F. Kenney signed an Executive Order to create the Vision Zero Task Force. Philadelphia is committed to reducing traffic-related deaths to zero by 2030.

VISIONZEROPHL.COM

